

## Our products for non-alcoholic beverages.

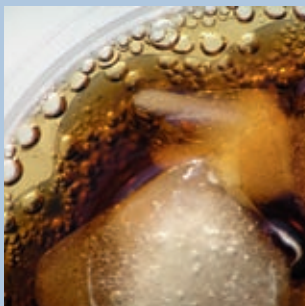
Page 1/2

ACE constituent no. 8444  
Apple base no. 5312 tart 1.25:1000  
Apple juice aroma no. 7951 0.5:1000  
Apple spritzer base no. 5319 110:1000  
Cherry aroma no. 7924  
Cherry juice base no. 5348 20:1000  
Cola base no. 380 3.1:1000  
Cola soda for beer-based mixed drink no. 05992  
Cola soda for beer-based mixed drink no. 608  
Diet grapefruit juice base no. 5327 30:1000  
Diet multi-fruit juice base no. 534150 70:1000  
Diet multi-vitamin mixed fruit nectar concentrate no. 533956 130:1000 (incl. sweetener)  
Diet multi-vitamin multi-fruit nectar no. 540574 120:1000 (incl. sweetener)  
Diet orange juice base no. 5320 30:1000  
Diet orange juice base no. 5615 20:1000  
Diet orange-passion fruit base no. 6015 30:1000  
Diet orange-passion fruit nectar concentrate no. 533967 110:1000 (incl. sweetener)  
Diet sweetening component Multisweet no. 6036 8.5:1000  
Diet sweetening component no. 528449  
Diet sweetening component no. 529269 20:1000  
Diet sweetening component no. 529270  
Elderflower aroma no. 7259  
Grapefruit juice base no. 5327 30:1000  
Grapefruit juice concentrate no. 5601 200:1000  
Grapefruit lemon sports drink base no. 530478 (incl.

sweetener, vitamins + minerals)  
Grapefruit lemon sports drink base no. 554281 (incl. sweetener, vitamins + minerals)  
Ice tea exotic no. 5416 25:1000  
Lemon aroma, natural no. 7127 0.9:1000  
Lemon essence no. 6967 0.7:1000  
Lemon juice concentrate no. 5502 20:1000  
Lemon juice no. 5357 20:1000  
Lemon soda essence no. 7136 0.9:1000  
Lemon soda essence no. 7149 1.3:1000  
Lemon soda essence no. 7717 0.3:1000  
Lemon soda essence no. 7794 0.7 – 0.8:1000  
Lime flavor base no. 550997 16:1000  
  
Mixed cola base no. 6230 15:1000  
Mixed cola soda base no. 5866 17:1000  
Mixed cola soda base no. 6351 15:1000  
Mulled wine essence no 8002 2.6:1000  
Multi-fruit base cherry no. 8640  
Multi-fruit base no. 7821 with green tea  
Multi-vitamin basic concentrate no. 5715 80:1000  
Multi-vitamin juice base no. 5708  
Multi-vitamin multi-fruit base no. 0711  
Multi-vitamin nectar concentrate no. 5702 130:1000  
NBB bouillon no. 4710

> Continued on page 2

Please ask us if you do not find your desired product here. We are happy to answer your questions about our products and their application.



*Ferdinand Kreutzer Sabamühle GmbH*

Headquarters | Burgberheimer Str. 11 | 90431 Nuremberg, Germany | Ph. +49 (0)911-324720 | +49 (0)911-3247230 |  
Branch | Handwerkerstr. 3 | 21423 Drage/Elbe, Germany | Ph. +49 (0)4177-71210 | info@saba.de | www.saba.de

## Our products *for non-alcoholic beverages.*

Page 2/2

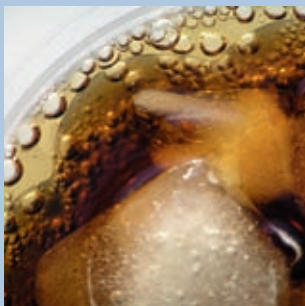
> Continued from page 1

NBB concentrate no. 4711  
NBB-A agar no. 4709  
NBB-B AM no. 4706  
NBB-B bouillon no. 4723 (1 piece = 20 test tubes)  
Orange aroma no. 7925  
Orange base no. 5371 20:1000  
Orange base no. 563569086 220:1000  
Orange base with 5 vitamins no. 5257 15:1000  
Orange juice base no. 5324 50:1000  
Orange juice base no. 5615 20:1000  
Orange juice concentrate no. 5605 220:1000  
Orange juice concentrate no. 5607 220:1000  
Orange juice concentrate no. 5685 90:1000  
Orange nectar no. 5733 110:1000  
Orange soda base no. 5130 16:1000  
Orange soda base no. 5136 12:1000  
Orange-carrot-lemon drink base no. 5511  
Passion fruit base no. 562292365 130:1000  
Passion fruit nectar concentrate no. 5719 130:1000  
Pineapple juice concentrate no. 5693 260:1000

Raspberry base no. 533286 17:1000  
Red berry flavor base no. 206999  
Redcurrant-elderberry nectar no. 535336  
Sterile swabs no. 04724 (1 carton = 100 pieces)  
Sweetening component Multisweet no. 15000 9.3:1000  
Vitamin mixture (4 vitamins) no. 5108 0.1:1000  
Vitamin mixture (5 vitamins) no. 5107 0.25:1000  
Woodruff soda base no. 5839

# Juices

Please ask us if you do not find your desired product here. We are happy to answer your questions about our products and their application.



*Ferdinand Kreutzer Sabamühle GmbH*

Headquarters | Burgberheimer Str. 11 | 90431 Nuremberg, Germany | Ph. +49 (0)911-324720 | +49 (0)911-3247230 |  
Branch | Handwerkerstr. 3 | 21423 Drage/Elbe, Germany | Ph. +49 (0)4177-71210 | info@saba.de | www.saba.de